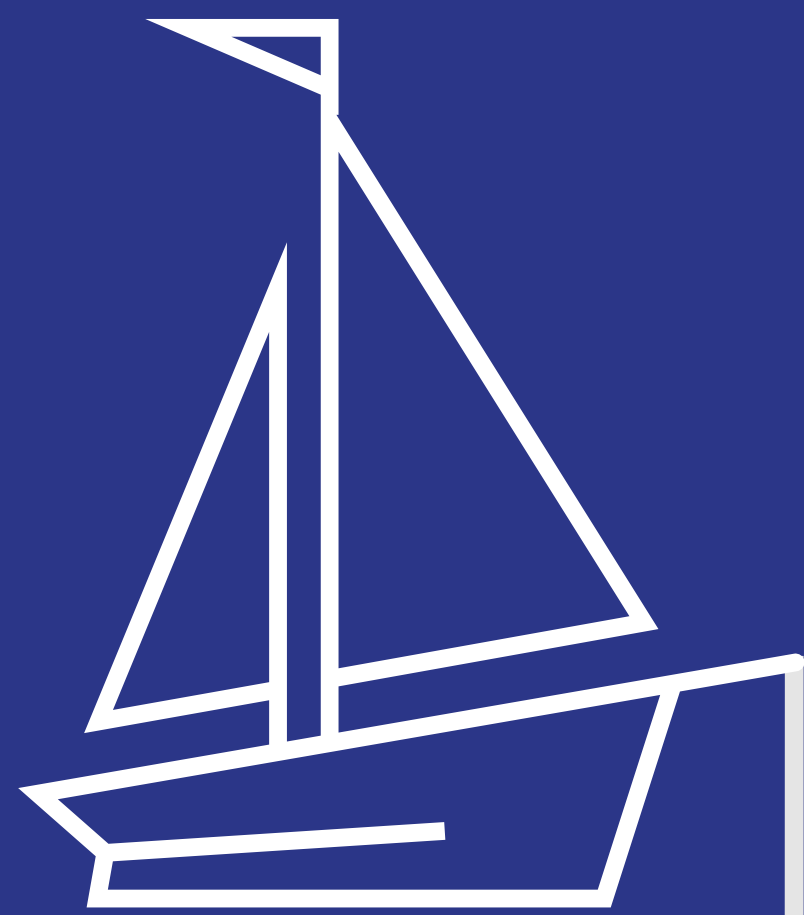
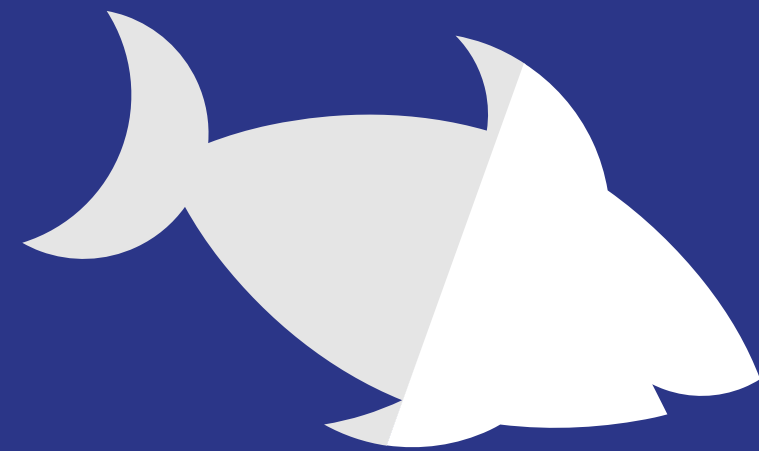


Types of Phishing attacks



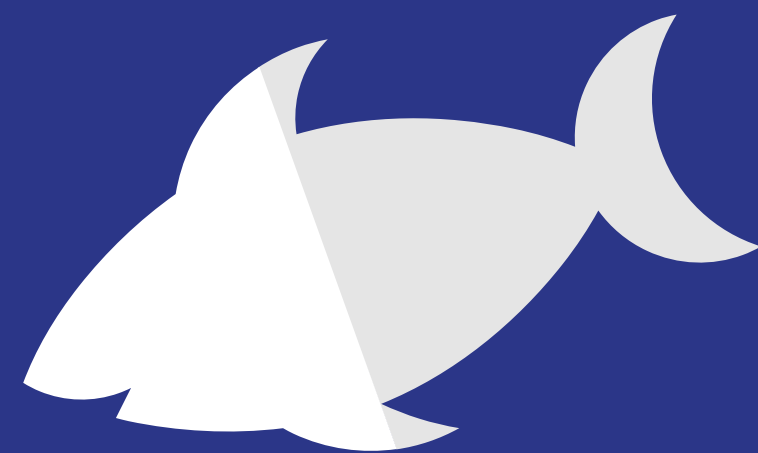
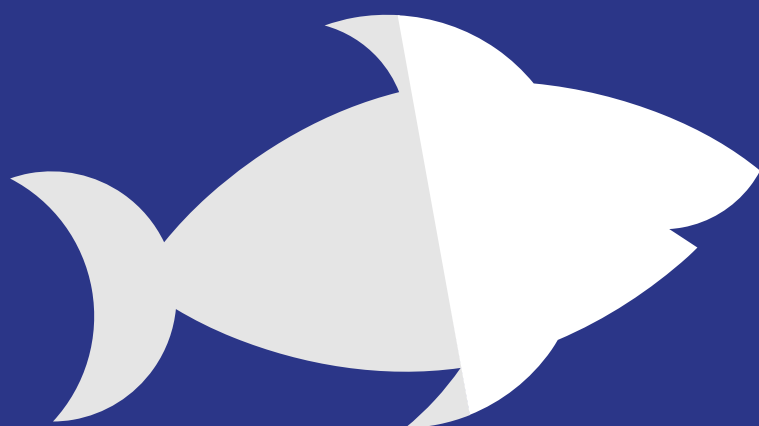
Spear Phishing

Email targeting specific team, department or individual.



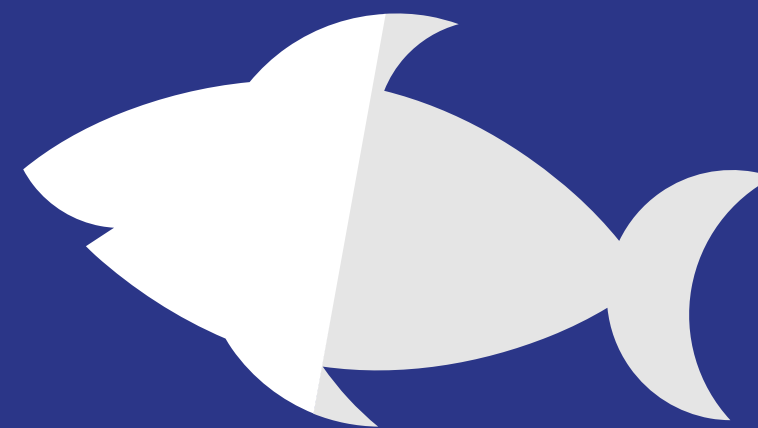
Clone Phishing

Cloning previous email you have received from a legitimate company.



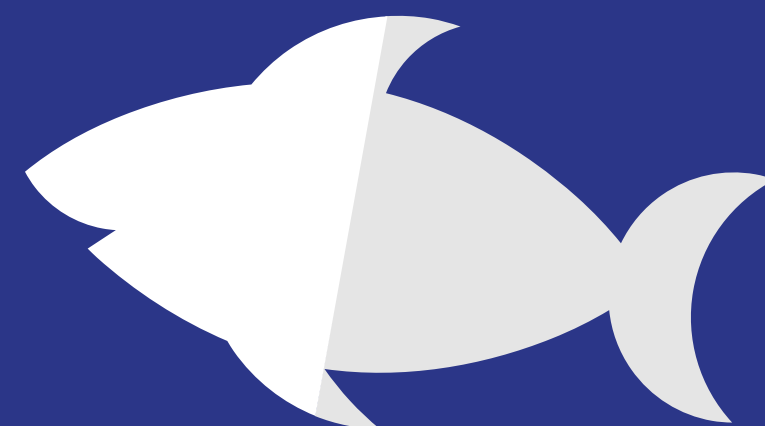
Whaling

Email attacking executives, department heads or managers.



Voice Phishing

Voicemail message instructing you to browse to a malicious weblink.



SMS Phishing

Phishing scam using SMS/Text messages rather than email.

What can we do when we receive a Phishing email?



- Double check the source of your emails and links.
- Delete any messages that look suspicious.
- Don't respond to an email requesting your personal or financial information.
- If unsure about the message you've received, call our **IT Service Desk** on +44 (0)1202 9 65515.